

Notices for AES 2015 Release

1. AES2015 Installation Instructions

The 2015 release is compiled for 32-bit Windows operating systems, and will operate on 64-bit Windows using emulator mode (just as Microsoft Office does today). This includes the Home, Business, Professional, Enterprise, and Ultimate editions of Windows Vista, Windows 7, Windows 8.1, and Windows 10 platforms. Windows 7, 64-bit is recommended. “Classic AES” will run without change on 64-bit systems through the 32-bit emulator. Security key and FORTRAN drivers have been updated for 64-bit support, as needed. The installation process is described below:

- a. Log on to your machine as a user with Administrator privileges.
- b. Ensure that Microsoft .NET version 2.0 or higher is installed.
 - i. Note! Windows 8 requires manually enabling .NET 3.5 through the Control Panel > Programs menu, if not already enabled.
- c. Download AES2015 from our website¹.
- d. **Run “aes2015.msi”**. On Windows Vista, please click “Allow”.



- e. Click “next” to allow the setup wizard to install AES to the correct locations. It is important to use the default path, “c:\aes2015”.

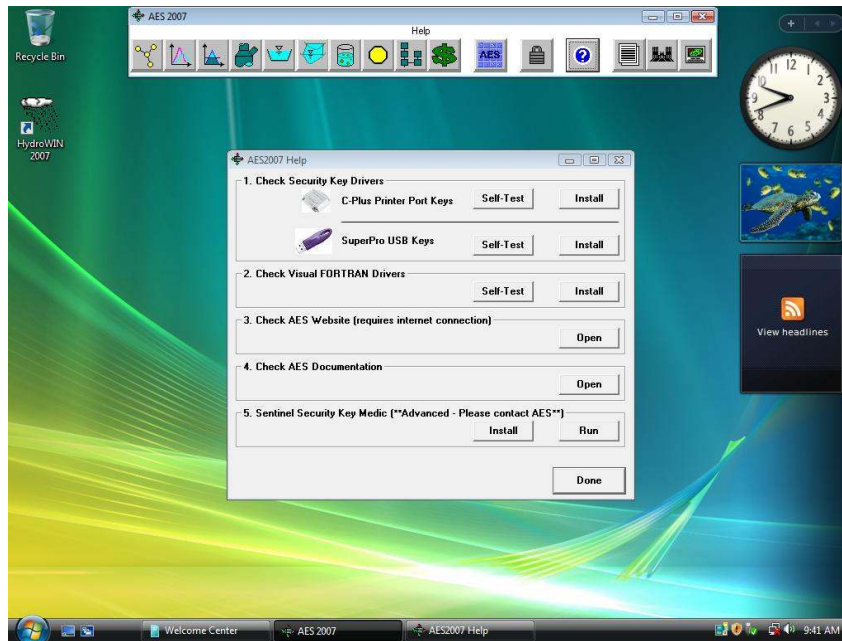
Once the setup program is complete, run HydroWIN to initialize AES. The installer automatically made a shortcut for you in the Windows Start menu, but not on the Windows desktop. HydroWIN is located under the “c:\aes2015\hydrosft\ratscx\” directory. We recommend that you use HydroWIN’s Help screen to Self-Test the two sets of third-party drivers (SafeNet Sentinel SuperPro, and Visual Fortran, respectively), because Windows security settings will sometimes not permit automatic installation of these drivers. For your convenience, the drivers can be re-installed by an Administrator from this same Help screen. HydroWIN will also self-check during the first three program runs to verify that these drivers are installed correctly.

AES/HydroWIN requires USB SuperPro keys. Please note that the legacy printer-port keys are no longer supported by either the supplier or AES.



USB key installer

The initial HydroWIN run will check your machine and may prompt you to install the SafeNet (formerly Rainbow Technologies, now owned by Gemalto) security drivers v.7.6.6. You can verify installation at any time by clicking “Help” on the main HydroWIN menu, and running the Self-Tests (see below).



AES HydroWIN main menu bar and help screen

If you need to set up your software codes for a new hardware lock, please use the “Authorize” button on the main HydroWIN menu bar.

At this point, older versions of the Windows OS may or may not ask to be re-started in order to register the new DLLs. Once this process is complete, HydroWIN is ready for use! Just click on HydroWIN from the Start menu again.

2. Windows Vista Machines

Installing software on these platforms requires that you are logged in with Administrator privileges. Please contact your IT administrator.

Further, Windows Vista users may need to adjust their UAC settings, although AES has worked carefully to mitigate the Cancel/Allow prompts. As a failsafe, AES includes five legacy ActiveX controls in case they are not distributed with your version of Windows Vista. These drivers and instructions for installing them are in the VistaDrivers.zip file located in the main \aes2015 directory.

Note #1: the “hydrowin.ini” file is located in the main \aes2015 directory.

Note #2: in Vista, the FORTRAN drivers can appear to “hang” during installation for up to two minutes.

WinNT, 2000, and XP are no longer supported by AES.

3. Legacy System Support: Using Older AES Data Files

Portions of the 2015 release are compiled using a FORTRAN compiler, which is derived from compilers produced by Intel, HP, Compaq, Digital, and early Microsoft PowerStation. Consequently, due to differences between Microsoft and the Intel compiler, older data files (prior to 1999) need to be converted to the newer format. A converter module is included in your software package. The Rational, Flood, and Pipeflow programs convert files by selecting the appropriate conversion module from the “Tools” menu.

Thank you for using AES.

ⁱ <http://www.advancedengineeringsoftware.com>